

BLA ETECH PVT. LTD.

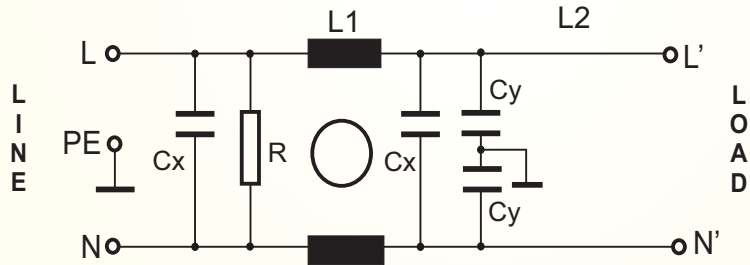
EMC, EMI FILTER & POWER SOLUTION

Single Phase Filter BLAF01-XXX-F/S

General Purpose EMI Filter With High Attenuation Performance



CIRCUIT DIAGRAM:



Technical Specification

Max Rated Voltage 250VAC

Operating Frequency 50/60Hz

Rated Current 1A to 30A @40°C

Hipot Test Voltage-

L-L 1500VDC 2sec

L-G 3000VDC 2sec

Temperature Range -25 to100 C

- Rated currents from 1 to 30A
- Very high differential mode attenuation
- Optional medical versions (M type)
- Optional safety versions

Applications:

- Power Control Equipment for Power Distribution Lines
- Industrial Equipment Vulnerable to Transients on the AC Power Line (Computers, Traffic Controls, Motor Controllers, Etc.)
- Communications systems and other heavy-duty industrial systems,
- Protection of Equipment Connected to Telephone or Signal Lines, Such as Security Systems, Railroad Equipment, Fire Alarm Systems, Etc
- For the purpose of protecting against electrical surges and spikes, including those caused by lightning.
- Arc Suppression Across Relay and Switch Contacts
- Scaled-down versions of these devices are sometimes installed in residential service entrance electrical panels, to protect equipment in a household from similar hazards

Features:

- Nanosecond Switching Response Time, <15 ns, with Minimal Lead Length.
- Various noisy applications requires high performance filter.
- No Extinguishing or Follow-On Current Limitations.

Benefits:

- Eliminates Dangerous Voltage Transients.
- Lowers Overall System Costs by Reducing Downtime and Maintenance Costs.
- Improves Component and System Reliability.
- Reduces EMP/RFI Interference.

FILTERS SELECTION TABLE

SN	PART NO	RATED CURRENT @40°C A	LEAKAGE CURRENT 250V/50Hz mA	MECHANICAL DIMENSION L X W X H (mm)	CONNECTION TYPE
1	BLAF01001F	1	0.34	62 X 32 X 22	FAST ON
2	BLAF01003F	3	0.50	71 X 45 X 29	FAST ON
3	BLAF01006F	6	0.74	85 X 51 X 30	FAST ON
4	BLAF01010F	10	0.74	85 X 51 X 30	FAST ON
5	BLAF01016F	16	1.57	113 X 56 X 45	FAST ON
6	BLAF01020F/S	20	1.57	113 X 56 X 45	FAST ON
7	BLAF01030S	30	1.57	170 X 72 X 65	SCREW

■ The BLAF01XXXX also available as M-version without Y-capacitor for medical application

■ BLAF01XXXX are also available in two stage filter (BLAF10XXXX) for very noisy environment

■ The BLAF01XXXX also delivered for over voltage protection with Z-type filters

■ BLAF01XXXX are also available in various terminal options which allow you to select desired connection

Remark ** Faston Terminal Size 6.38 x 0.8 mm

INSERTION LOSS(dB)

1A

MHZ	0.5	1	2	5	10
CM	46	42	45	48	42
DM	84	74	61	40	24

3A

MHZ	0.5	1	2	5	10
CM	45	43	49	44	40
DM	88	73	60	39	25

6A

MHZ	0.5	1	2	5	10
CM	50	47	47	48	25
DM	93	71	57	39	23

10A

MHZ	0.5	1	2	5	10
CM	51	49	49	55	52
DM	90	72	59	42	27

16A

MHZ	0.5	1	2	5	10
CM	52	52	57	50	37
DM	82	68	55	39	25

20A

MHZ	0.5	1	2	5	10
CM	55	51	58	53	38
DM	86	69	53	39	22

30A

MHZ	0.5	1	2	5	10
CM	50	48	57	47	38
DM	78	65	55	36	21

CORPORATE OFFICE AND MANUFACTURING UNIT

**BLA ETECH PVT LTD
A-42
WAZIRPUR INDUSTRIAL AREA
NEW DELHI-110052
INDIA**



CONTACT DETAIL

WEB- www.blaetech.com

Email- info@blaetech.com

TEL- +91-11-47483290

Mob-+91-9899197050