



# BLA ETECH PVT. LTD.

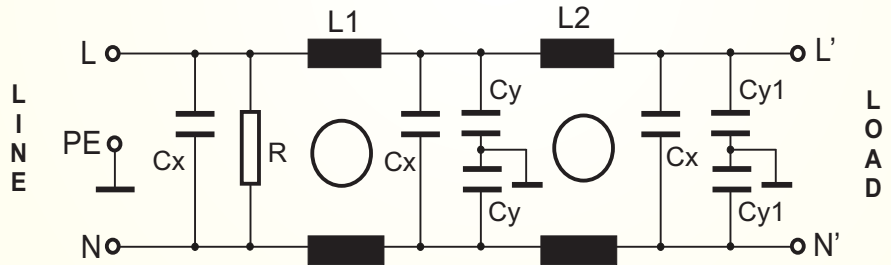
EMC, EMI FILTER & POWER SOLUTION

## Single Phase Filter BLAF10-XXX-F/S

General Purpose EMI Filter With Very High Attenuation Performance



### CIRCUIT DIAGRAM:



- Rated currents from 1 to 30A
- Two-stage filter
- Very high differential and common-mode attenuation
- Optional medical versions (M type)
- Optional safety versions

### Technical Specification

Max Rated Voltage 250VAC

Operating Frequency 50/60Hz

Rated Current 1A to 30A @40°C

Hipot Test Voltage-

L-L 1500VDC 2sec

L-G 3000VDC 2sec

Temperature Range -25 to100 C

### Applications:

- Power Control Equipment for Power Distribution Lines
- Industrial Equipment Vulnerable to Transients on the AC Power Line (Computers, Traffic Controls, Motor Controllers, Etc.)
- Communications systems and other heavy-duty industrial systems,
- Protection of Equipment Connected to Telephone or Signal Lines, Such as Security Systems, Railroad Equipment, Fire Alarm Systems, Etc
- For the purpose of protecting against electrical surges and spikes, including those caused by lightning.
- Arc Suppression Across Relay and Switch Contacts
- Scaled-down versions of these devices are sometimes installed in residential service entrance electrical panels, to protect equipment in a household from similar hazards

### Features:

- Nanosecond Switching Response Time, <15 ns, with Minimal Lead Length.
- Various noisy applications requires high performance filter.
- No Extinguishing or Follow-On Current Limitations.

### Benefits:

- Eliminates Dangerous Voltage Transients.
- Lowers Overall System Costs by Reducing Downtime and Maintenance Costs.
- Improves Component and System Reliability.
- Reduces EMP/RFI Interference.

# FILTERS SELECTION TABLE

SN	PART NO	RATED CURRENT @40°C	LEAKAGE CURRENT 250V/50Hz mA	MECHANICAL DIMENSION L X W X H (mm)	CONNECTION TYPE
1	BLAF10001F	1	0.50	71 X 45 X 29	FAST ON
2	BLAF10003F	3	0.50	71 X 45 X 29	FAST ON
3	BLAF10006F	6	0.67	85 X 51 X 30	FAST ON
4	BLAF10010F	10	0.67	113 X 57 X 45	FAST ON
5	BLAF10016F	16	1.73	113 X 57 X 45	FAST ON
6	BLAF10020F/S	20	1.73	113 X 57 X 45	FAST ON
7	BLAF10030S	30	1.73	170 X 72 X 65	SCREW

■ The BLAF10XXXX also available as M-version without Y-capacitor for medical application

■ The BLAF10XXXX also delivered for over voltage protection with Z-type filters

■ BLAF10XXXX are also available in Single stage filter (BLAF01XXXX) for noisy environment

■ BLAF10XXXX are also available in various terminal options which allow you to select desired connection type

REMARK

\*\* FASTON TERMINAL SIZE 6.38 X 0.8 mm

\*\*\*SCREW SIZE AS PER CUSTOMER REQUIREMENT

# INSERTION LOSS(dB)

## 1A

MHZ	0.5	1	2	5	10
CM	94	82	63	44	29
DM	85	75	61	44	30

## 3A

MHZ	0.5	1	2	5	10
CM	91	79	64	45	27
DM	78	72	60	45	31

## 6A

MHZ	0.5	1	2	5	10
CM	68	95	74	57	41
DM	66	80	67	55	38

## 10A

MHZ	0.5	1	2	5	10
CM	61	92	78	59	42
DM	60	83	68	55	39

## 16A

MHZ	0.5	1	2	5	10
CM	90	73	52	43	29
DM	76	63	48	31	11

## 20A

MHZ	0.5	1	2	5	10
CM	91	74	56	40	30
DM	78	62	49	32	14

## 30A

MHZ	0.5	1	2	5	10
CM	76	67	54	43	36
DM	66	57	49	36	23

## CORPORATE OFFICE AND MANUFACTURING UNIT

**BLA ETECH PVT LTD  
A-42  
WAZIRPUR INDUSTRIAL AREA  
NEW DELHI-110052  
INDIA**



### CONTACT DETAIL

**WEB- [www.blaetech.com](http://www.blaetech.com)**

**Email- [info@blaetech.com](mailto:info@blaetech.com)**

**TEL- +91-11-47483290**

**Mob-+91-9899197050**