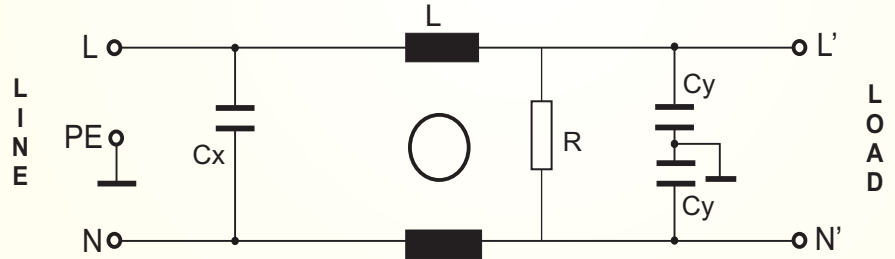


CIRCUIT DIAGRAM:



Technical Specification

Max Rated Voltage 250VAC, 50/60 Hz

Operating Frequency DC to 400Hz

Rated Current 0.5A to 6.5A @40°C

Hipot Test Voltage-

L-L 2850VDC 2sec

L-G 1100VDC 2sec

Temperature Range -25 to +100°C(25/100/21)

- Rated currents from 0.5A to 6.5A
- Very compact PCB-mountable design.
- Single phase power supplies, switch mode power supplies
- Electrical and electronic equipment.

Applications:

- Power Control Equipment for DC to 400Hz electrical and electronic equipment.
- Industrial Equipment Vulnerable to Transients on the DC/AC Power Line (Computers, Traffic Controls, Motor Controllers, Etc.)
- Communications/IT systems
- Protection of Equipment Connected to Telephone or Signal Lines, Such as Security Systems, Railroad Equipment, Fire Alarm Systems, Etc
- Standard PCB single-phase equipment .
- Scaled-down versions of these devices are sometimes installed in residential service entrance electrical panels, to protect equipment in a household from similar hazards

Features:

- Filter designed for easy and fast PCB-mounting.
- Custom specific versions on request.

Benefits:

- Good conducted attenuation performance, based on chokes with high saturation resistance and excellent thermal behavior.
- Lowers Overall System Costs by Reducing Downtime and Maintenance Costs.
- Improves Component and System Reliability.
- Reduces EMP/RFI Interference.

FILTERS SELECTION TABLE

SN	PART NO	RATED CURRENT @40°C A	LEAKAGE CURRENT 250V/50Hz mA	MECHANICAL DIMENSION L X W X H (mm)	CONNECTION TYPE
1	BLAD02-0.5-H	0.5	0.373	45X15X16.5	HOLE-MOUNTED
2	BLAD02-1-H	1	0.373	45X15X16.5	HOLE-MOUNTED
3	BLAD02-1.6-H	1.6	0.373	45X15X16.5	HOLE-MOUNTED
4	BLAD02-2.5-H	2.5	0.373	45X15X16.5	HOLE-MOUNTED
5	BLAD02-4-H	4	0.373	45X15X16.5	HOLE-MOUNTED
6	BLAD02-6.5-H	6.5	0.373	45X15X16.5	HOLE-MOUNTED

- The BLAD02-XXX-H also offer good range amperage ratio/size and cover large scale usage
- BLAD02-XXX-H are also available in Medical versions (M-Type).

REMARK

** TERMINAL SIZE AS PER MOUNTING HOLE

INSERTION LOSS(dB)

0.5A

MHZ	0.1	0.5	1	5	10
CM	52	60	49	50	41
DM	19	42	70	67	62

1A

MHZ	0.1	0.5	1	5	10
CM	53	48	52	51	42
DM	20	43	68	66	64

1.6A

MHZ	0.1	0.5	1	5	10
CM	52	63	50	52	40
DM	22	45	72	69	62

2.5A

MHZ	0.1	0.5	1	5	10
CM	20	31	40	49	50
DM	7	14	25	57	58

4A

MHZ	0.1	0.5	1	5	10
CM	22	32	42	49	52
DM	9	16	24	58	59

6.5A

MHZ	0.1	0.5	1	5	10
CM	21	33	41	50	50
DM	6	15	25	58	62

CORPORATE OFFICE AND MANUFACTURING UNIT

**BLA ETECH PVT LTD
A-42
WAZIRPUR INDUSTRIAL AREA
NEW DELHI-110052
INDIA**



CONTACT DETAIL

WEB- www.blaetech.com

Email- info@blaetech.com

TEL- +91-11-47483290

Mob-+91-9899197050