



BLA ETECH PVT. LTD.

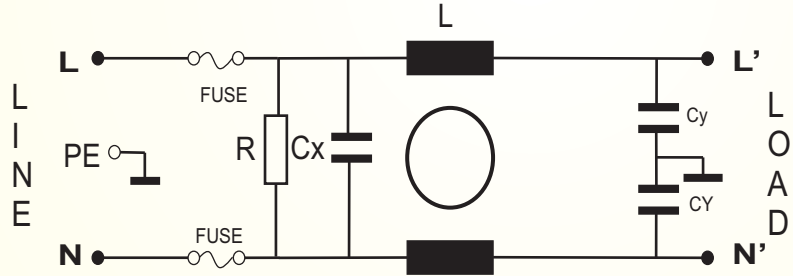
EMC, EMI FILTER & POWER SOLUTION

Single Phase Filter BLAR03-XXX-F

Power Entry EMI Filter with fuse protection



CIRCUIT DIAGRAM:



Technical Specification

Max Rated Voltage 120/250 VAC

Operating Frequency 50/60Hz

Rated Current 1A to 10A @40°C

Hipot Test Voltage-

L-L 1450VDC 1min

L-G 2820VDC 1min

Temperature Range -25 to +85°C

- Rated currents from 1 to 10A.
- Low cost.
- Supply special low leakage current for medical devices.

Applications:

- Power Control Equipment for AC Lines.
- Industrial Equipment Vulnerable to Transients on the DC Power Line (Computers, Traffic Controls, Motor Controllers, Etc.)
- Communications systems and IT systems.
- Protection of Equipment Connected to Telephone or Signal Lines, Such as Security Systems, Railroad Equipment, Fire Alarm Systems, Etc.
- Thyristor Driven control equipment .
- Scaled-down versions of these devices are sometimes installed in residential service entrance electrical panels, to protect equipment in a household from similar hazards

Features:

- General purpose filter providing EMI suppression of both L-L and L-G noise.
- Various noisy applications requires high performance filter.
- No Extinguishing or Follow-On Current Limitations.

Benefits:

- Eliminates Dangerous Voltage Transients.
- Lowers Overall System Costs by Reducing Downtime and Maintenance Costs.
- Improves Component and System Reliability.
- Reduces EMC/RFI Interference.

FILTERS SELECTION TABLE

| SN | PART NO | RATED CURRENT @40°C A | LEAKAGE CURRENT 250V/50Hz mA | MECHANICAL DIMENSIONS L X W X H (mm) | CONNECTION TYPE |
|----|-------------|-----------------------------|------------------------------------|--|-----------------|
| 1 | BLAR03-1-F | 1 | 0.3 | 58 X 44.5 X 33.5 | FAST ON |
| 2 | BLAR03-3-F | 3 | 0.3 | 58 X 44.5 X 33.5 | FAST ON |
| 3 | BLAR03-6-F | 6 | 0.3 | 58 X 44.5 X 33.5 | FAST ON |
| 4 | BLAR03-10-F | 10 | 0.3 | 58 X 44.5 X 33.5 | FAST ON |

- The BLAR03-XXX-F also offer good range amperage ratio/size and cover large scale usage
- BLAR03-XXX-F supply special low leakage current for medical devices, and accept custom design filter.

REMARK

** FASTON TERMINAL SIZE 6.38 X 0.8 mm

INSERTION LOSS(dB)

1A

| | | | | | |
|-----|-----|----|----|----|----|
| MHZ | 0.5 | 1 | 2 | 5 | 10 |
| CM | 39 | 41 | 40 | 37 | 38 |
| DM | 19 | 28 | 35 | 42 | 42 |

3A

| | | | | | |
|-----|-----|----|----|----|----|
| MHZ | 0.5 | 1 | 2 | 5 | 10 |
| CM | 28 | 33 | 36 | 38 | 39 |
| DM | 21 | 23 | 34 | 43 | 45 |

6A

| | | | | | |
|-----|-----|----|----|----|----|
| MHZ | 0.5 | 1 | 2 | 5 | 10 |
| CM | 22 | 28 | 33 | 44 | 46 |
| DM | 16 | 21 | 30 | 41 | 44 |

10A

| | | | | | |
|-----|-----|----|----|----|----|
| MHZ | 0.5 | 1 | 2 | 5 | 10 |
| CM | 15 | 21 | 28 | 33 | 39 |
| DM | 14 | 10 | 42 | 54 | 44 |

CORPORATE OFFICE AND MANUFACTURING UNIT

**BLA ETECH PVT LTD
A-42
WAZIRPUR INDUSTRIAL AREA
NEW DELHI-110052
INDIA**



CONTACT DETAIL

WEB- www.blaetech.com

Email- info@blaetech.com

TEL- +91-11-47483290

Mob-+91-9899197050