



# BLA ETECH PVT. LTD.

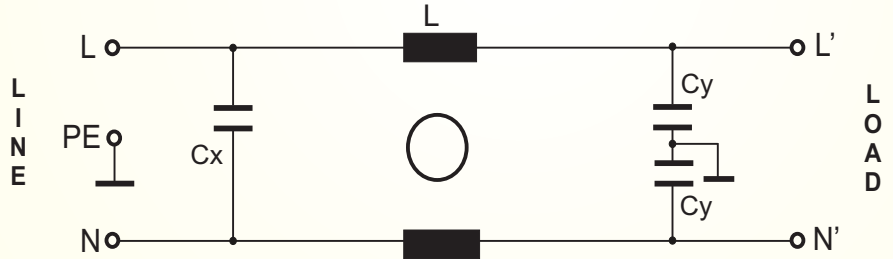
EMC, EMI FILTER & POWER SOLUTION

## Single Phase Filter BLIC03-XX-F

### General Purpose Entry Module EMI Filter



#### CIRCUIT DIAGRAM:



#### Technical Specification

Max Rated Voltage 250VAC

Operating Frequency 50/60Hz

Rated Current 1A to 10A @40°C

Hipot Test Voltage-

L-L 1450 VDC 2sec

L-G 2250 VDC 2sec

Temperature Range -25 to +85°C(25/85/21)

- Rated currents from 1 to 10A
- Single stage filter
- High differential mode attenuation
- Optional medical versions (M type)

#### Applications:

- Power Control Equipment for Power Distribution Lines
- Industrial Equipment Vulnerable to Transients on the AC Power Line (Computers, Traffic Controls, Motor Controllers, Etc.)
- Communications systems and other heavy-duty industrial systems,
- Protection of Equipment Connected to Telephone or Signal Lines, Such as Security Systems, Railroad Equipment, Fire Alarm Systems, Etc
- For the purpose of protecting against electrical surges and spikes, including those caused by lightning.
- Arc Suppression Across Relay and Switch Contacts
- Scaled-down versions of these devices are sometimes installed in residential service entrance electrical panels, to protect equipment in a household from similar hazards

#### Features:

- Nanosecond Switching Response Time, <15 ns, with Minimal Lead Length.
- Various noisy applications requires high performance filter.
- No Extinguishing or Follow-On Current Limitations.

#### Benefits:

- Eliminates Dangerous Voltage Transients.
- Lowers Overall System Costs by Reducing Downtime and Maintenance Costs.
- Improves Component and System Reliability.
- Reduces EMP/RFI Interference.

# FILTERS SELECTION TABLE

SN	PART NO	RATED CURRENT @40°C      A	LEAKAGE CURRENT 250V/50Hz mA	MECHANICAL DIMENSION L X W X H (mm)	CONNECTION TYPE
1	BLIC03-01-F	1	0.75	55 X 29 X 22	FAST ON
2	BLIC03-03-F	3	0.75	55 X 29 X 22	FAST ON
3	BLIC03-06-F	6	0.75	55 X 29 X 22	FAST ON
4	BLIC03-10-F	10	0.75	55 X 29 X 22	FAST ON

REMARK

\*\* FASTON TERMINAL SIZE 6.38 X 0.8 mm

# INSERTION LOSS(dB)

## 1A

MHZ	0.5	1	2	5	10
CM	32	35	37	41	42
DM	19	23	33	44	45

## 3A

MHZ	0.5	1	2	5	10
CM	27	33	39	41	43
DM	17	21	35	44	44

## 6A

MHZ	0.5	1	2	5	10
CM	22	26	31	39	43
DM	16	21	31	38	42

## 10A

MHZ	0.5	1	2	5	10
CM	15	19	28	33	39
DM	14	18	27	34	42

## CORPORATE OFFICE AND MANUFACTURING UNIT

**BLA ETECH PVT LTD  
A-42  
WAZIRPUR INDUSTRIAL AREA  
NEW DELHI-110052  
INDIA**



### CONTACT DETAIL

**WEB- [www.blaetech.com](http://www.blaetech.com)**

**Email- [info@blaetech.com](mailto:info@blaetech.com)**

**TEL- +91-11-47483290**

**Mob-+91-9899197050**